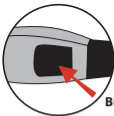


To Insert Strap:

Press button on side of glasses to release arms. Insert strap into opening and "click" into place



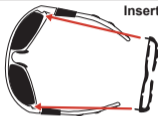
Button

To Remove Strap:

Press on the same button to release the strap, then replace the sunglasses arms.

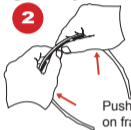
Inserting or Removing Foam Eye Pad:

1



Align the two tabs on each end of the foam with the two slits on either side of the frame.

2



Push the foam into the slits on frame until secure.

Changing The Lenses:

To Remove Lenses

1



Hold the frame in both hands with the lenses facing out. Press firmly on the top of each lens to "pop" it out of the frame.

2



To Replace Lenses

1



Place the wider edge of each lens in the groove of the frame, closest to the nose piece.

2

